



Patient navigation – making the connections to better health

LEANNE WELLS

Health care, can you find it? – in our world-leading, world-class, fragmented system

Australians have one of the most high-performing health care systems in the world. Consumers...

YVONNE ZURYNSKI, LOUISE ELLIS AND JEFFREY
BRAITHWAITE

Navigating through the fragmented healthcare maze

Would you get into an aeroplane with a faulty navigation system? In 2015, the...




GUIDANCE

PROFESSOR ANNE DUGGAN

Enabling consumers to navigate the health system

Australia has one of the best healthcare systems in the world.[1] However, it can...

0:13



LEARNE DURRINGTON

Care co-ordination – an antecedent to fragmentation in health care

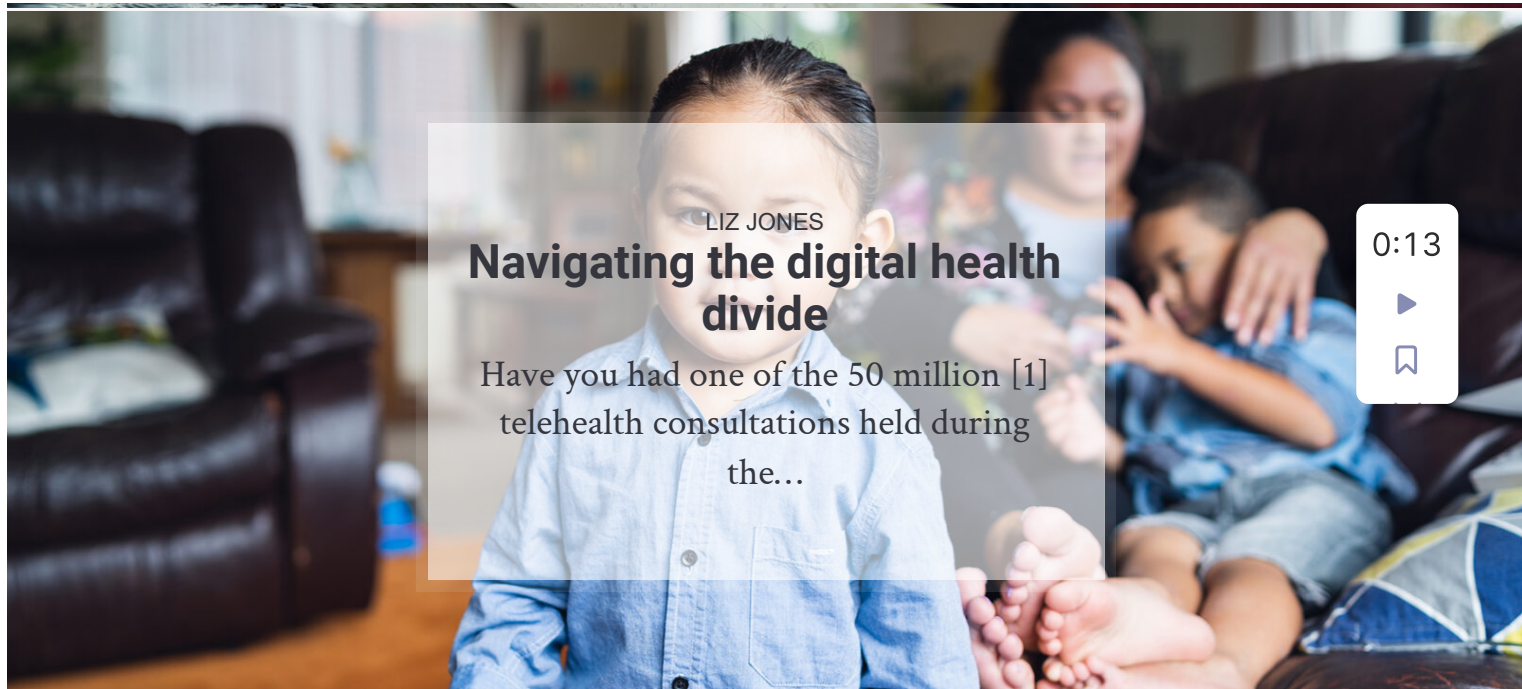
A discussion on care navigation and care co-ordination is inextricably linked to the reality...



BETTINA MCMAHON

Healthdirect – taking the difficulty out of navigating health services

To sail or travel over a stretch of water or terrain, especially carefully or...



LIZ JONES

Navigating the digital health divide

Have you had one of the 50 million [1] telehealth consultations held during the...

0:13



SIÂN SLADE

The future of health is patient-partnered – but how do we get there? #NavigatingHealth

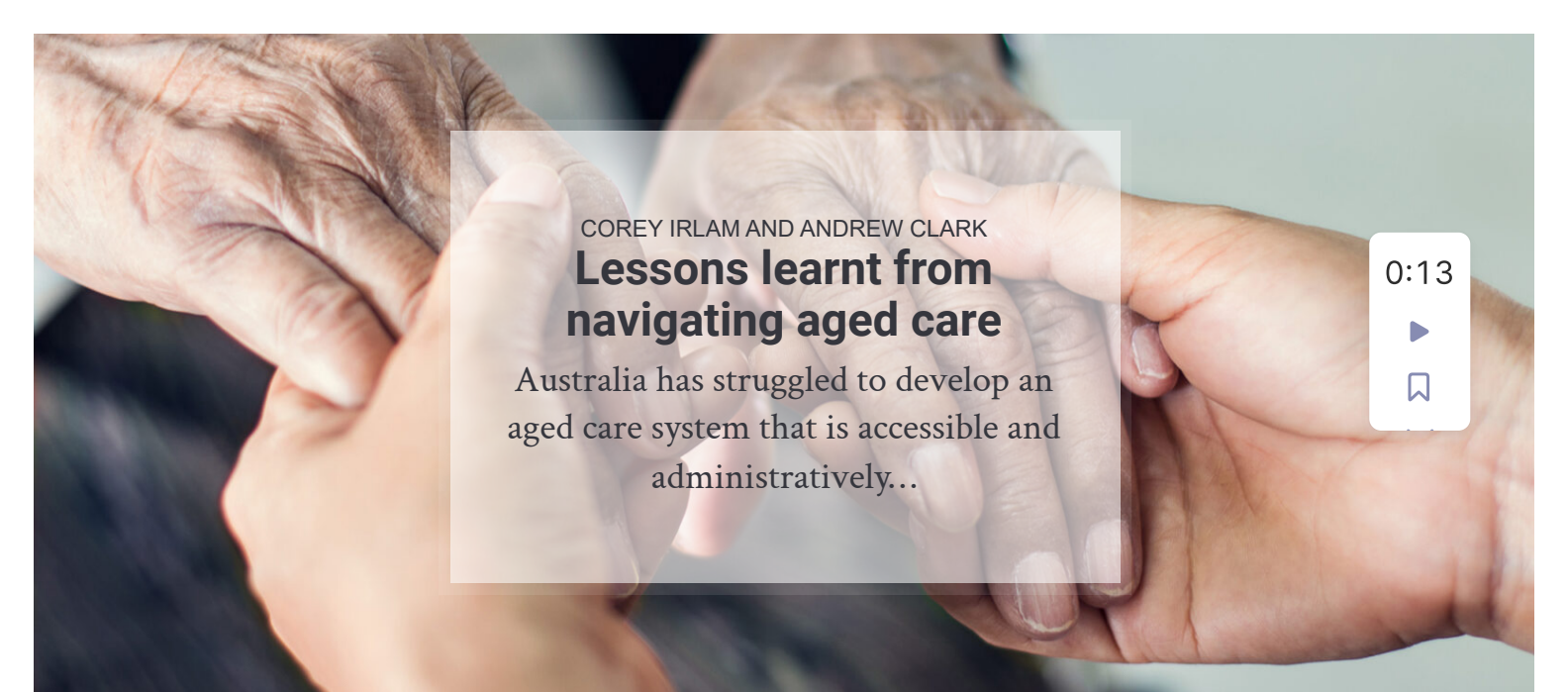
The CSIRO Future of Health 2018 provides an illustration of how the health system...



DR LEANNE BEAGLEY

Mental health peer navigators

Australia's mental health system is fragmented. Services are not integrated with one another so...



COREY IRLAM AND ANDREW CLARK

Lessons learnt from navigating aged care

Australia has struggled to develop an aged care system that is accessible and administratively...


0:13



GAIL O'BRIEN AO

Patient navigation in cancer care

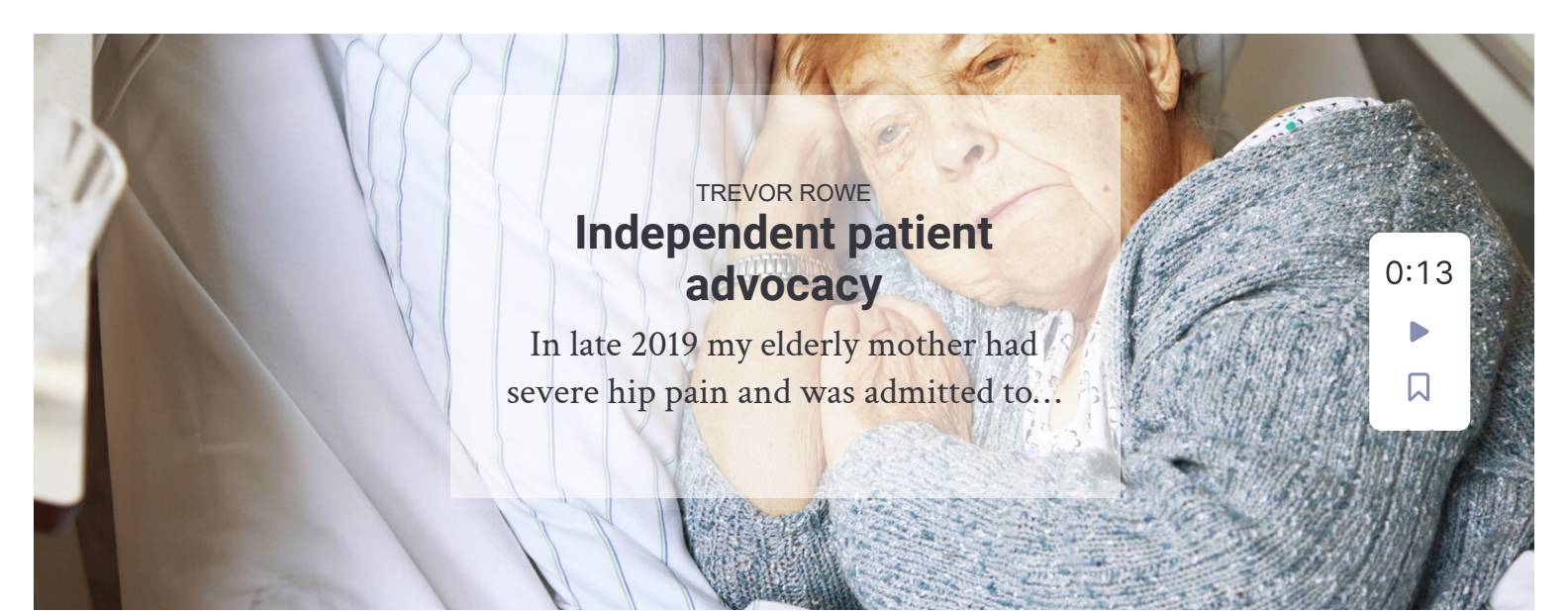
Gail O'Brien was married to the late Professor Chris O'Brien (AO), and played an...



DR RUTH KNIGHT, ASSOC PROFESSOR BELINDA LUKE AND ANNE HODGE

A new program supporting support young mothers navigate the health system

Young people today have to navigate a health system that is typically intended for...

An elderly woman with short, reddish hair is lying in a hospital bed. She is wearing a blue and white patterned sweater. Her hands are clasped together near her face, and she has a thoughtful or slightly distressed expression. The background shows the white and blue striped bedding of the hospital bed.

TREVOR ROWE

Independent patient advocacy

In late 2019 my elderly mother had severe hip pain and was admitted to...

0:13

A scene in a hospital hallway. On the left, a woman in a grey blazer and white shirt walks towards the camera. In the center, a woman in blue scrubs and a white lab coat walks away. On the right, a man in blue scrubs is seated at a desk, looking at a computer screen. Another man in a white lab coat is partially visible in the foreground on the right, looking towards the seated man.

ANNETTE PEART

Relationship-centred care and patient navigation

There is increasing recognition that genuinely focusing on the needs and wishes of consumers...

SEARCH

0:13



Type and hit enter

ISSUES

NOVEMBER 2021

APRIL 2021

NOVEMBER 2020

MAY 2020

NOVEMBER 2019

MAY 2019

NOVEMBER 2018

MAY 2018

PREVIOUS ISSUES

VISIT CHF



The Consumers Health Forum of Australia (CHF) is the national peak body representing the interests of Australian healthcare consumers. CHF works to achieve safe, quality, timely healthcare for all Australians, supported by accessible health information and systems.